

Range overview

Undercounter dishwashers, hood type dishwashers,
utensil washers



UPster® U / UPster® H – warewashing technology for new entrants, upgraders and shrewd spenders

The MEIKO **UPster®** offers cleanly designed technology at a fantastic price. That gives both entrants and upgraders the fastest route to a sparkling future. Enjoy a whole host of benefits that **UPster®** features: quick and easy ordering and delivery, versatile uses, modern design, added bonus of a third wash programme and the proven MEIKO quality such as the durable stainless steel dosing pipes.

UPster® U 400

Get glassware and washware sparkling clean in no time!

Easy to use with an intuitive key pad. Plus double-walled heat insulation to keep the heat in and minimise energy use.



Entry height

H 300 mm

Dimensions

H 700-730 mm, W 460 mm,
D 600 mm

Rack dimensions

400 x 400 mm

Rack capacity

Up to 30 racks / hour

UPster® U 500 G

Fits under nearly every counter

The **UPster® U 500 G** glasswasher is a robust "all-rounder" for the counter area and will make your glasses shine. Thanks to the top wash system no corner remains dry. The simple operation and the many comfort features ensure a hygienic and convincing washing result. With its lower overall height, the **UPster® U 500 G** fits under nearly every counter. Whether mounted on a plinth, with integrated **GiO MODULE** in the base frame or at the rear of the machine.



Comfort options:

- MEIKO **GiO MODULE** technology

– **under the machine**

(Fig. with **GiO MODULE** in machine plinth)
H 820-850 mm

– **at the rear of the machine**

D 690 mm

– **adjacent to the machine**

or e.g. in another room

GiO MODULE

H 600 mm, W 140 mm,

D 550 mm

Entry height

H 315 mm

Dimensions

H 700-730 mm, W 600 mm,
D 600 mm

Rack dimensions

500 x 500 mm

Rack capacity

Up to 40 racks / hour

UPster® U 500

This machine gets everything perfectly clean

The *UPster® U 500* handles dishes and glasses as well as larger items of washware with ease. With its appealing, modern design and the use of proven MEIKO technology, the *UPster® U 500* always cuts a fine figure even under the counter. And also the features speak for themselves: spacious wash chamber, comfortable self-cleaning programme, soft start for very gentle washing, three programme cycle times, convincing consumption values. And all for an absolutely fair price. That makes the *UPster® U 500* the cleaning star in the price/performance class from MEIKO.



Comfort options:

- MEIKO *GiO MODULE* technology
 - under the machine
 - H 940-970 mm
 - at the rear of the machine
 - (Fig. with *GiO MODULE* at the rear of the machine)
 - D 690 mm
 - adjacent to the machine
 - or e.g. in another room
 - GiO MODULE***
 - H 600 mm, W 140 mm,
 - D 550 mm

Entry height

H 420 mm

Dimensions

H 820-850 mm, W 600 mm,

D 600 mm

Rack dimensions

500 x 500 mm

Rack capacity

Up to 40 racks / hour

UPster® H 500

Combines ergonomics and power under one hood

The *UPster® H 500* offers powerful cleaning and best comfort in an easy-to-use package – especially with a high throughput in the dishwashing area. Even large or high washware can be simply and conveniently pushed into the *UPster® H 500* sideways. Now simply press down the hood handle and off you go: the automatic programme start initiates the wash operation. Another plus: when you open it the steam escapes to the rear and not into the face of wash personnel. With so much operator comfort, working almost becomes a pleasure!



Comfort options:

- MEIKO *AirConcept*
- MEIKO *GiO MODULE* technology
 - (Fig. with *GiO MODULE* on bracket next to the machine)
- Water change programme

Passing height

H 440 mm

Dimensions

H 2050 mm,
with MEIKO *AirConcept*
H 2140 mm,

W 635 mm, D 750 mm

Rack dimensions

500 x 500 mm

Rack capacity

Up to 40 racks / hour

M-iClean – warewashing technology in premium quality

Quality made by MEIKO: stainless steel, innovative cutting-edge technology, design and ergonomic comfort. The *M-iClean* series from MEIKO sets new standards in high functionality and investment security.

The latest generation of *M-iClean U* undercounter dishwashing machines offers several features to take

the strain out of day-to-day work. The fully integrated *GiO MODULE* saves on space, as well as installation and maintenance costs – plus, polishing glasses, dishes and cutlery is a thing of the past. What about heat recovery? Yes, and now it is highly efficient. MEIKO *ComfortAir* removes up to 80%* of steam, improving indoor climate. And hygiene? DIN compliant, of course.



M-iClean U
With heat recovery
ComfortAir
and fully integrated
reverse osmosis
GiO MODULE

M-iClean US undercounter dishwashing machine

*Compared to the previous MEIKO model. Maximum values with reference to using the *ComfortAir*.

***M-iClean H* hood type dishwashing machines offer more power and ergonomics than ever before:** with an automatic soft-touch hood system and rack detection to make life much easier and more efficient for operators. Clearly reduced wash cycle times, fewer staff absences,

and reduced operating costs. Now fully integrated: optional water treatment technology using reverse osmosis, the **MEIKO GiO MODULE**. This system ensures clean washware, free of residues, without requiring any polishing.



M-iClean HL hood type dishwashing machine with *AirConcept*, exhaust air heat recovery and table unit

M-iClean U – even faster and almost steamless



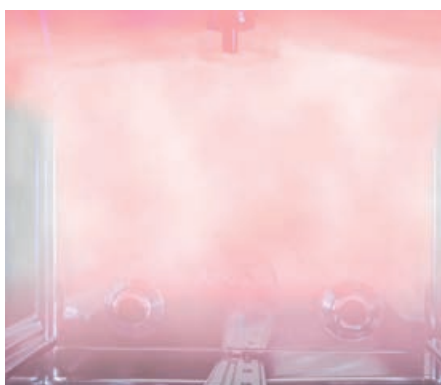
M-iClean U with MEIKO ComfortAir heat recovery

Wash quickly, save quickly: the *M-iClean U* saves an entire 30 seconds per wash cycle using the *ComfortAir* heat recovery system with its larger heat recovery tank. Saving

time and resources: operating costs are reduced by up to 21%*.



MEIKO *ComfortAir* heat recovery: the larger stainless steel heat exchanger surface...



... provides faster cooling. This causes steam to condense on the cool inner wall...



...and practically no steam escapes when opening the machine.



Opening the dishwashing machine with almost no steam: the air is clear even after opening the door after the wash cycle. No hot steam hitting operating staff in the face, no fogged-up glasses, no moisture on furniture. The staff are immediately excited about the pleasant indoor climate – and very motivated at work.

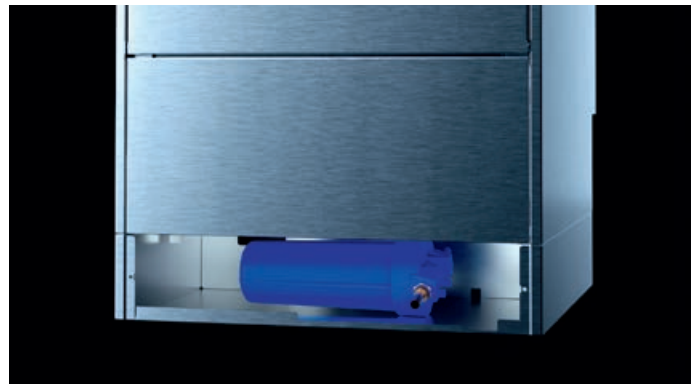
Almost dry: the MEIKO *ComfortAir* heat recovery system condenses even more moist steam on the internal wall of the machine. That means that by the end of the cycle, the residual moisture is down by up to 98%* on plates and up to 75%* on glasses, so they are ready for use again after a short time. In addition, water treatment in the form of a reverse osmosis system, the MEIKO *GiO MODULE* (optional), which is fully integrated into the machine, ensures the purest wash water and thus brilliant washing results without polishing.

On your marks, get set, go!

Compact structure and quickly installed: the *M-iClean U* with MEIKO *GiO MODULE* reverse osmosis technology eliminates the need for a time-consuming pre-installation or even expensive conversion work, as all the necessary components are already housed in the machine. That saves you time, space and money.

MEIKO *Private Label*, the personal touch: MEIKO *Private Label* turns the new *M-iClean U* into a fully customised MEIKO machine. The welcome screen can be individually configured with a logo. In addition, up to three different images can be stored as screen savers, such as contact details for the service team.

Mighty fine! The fine filter can be replaced easily and quickly so you don't have to wait for a service technician and, most importantly, there are no unnecessary maintenance costs.



Quality made by MEIKO: stainless steel instead of plastic, innovative cutting-edge technology and design for reliable functionality and return on investment.



Your benefits:

- Saves 30 seconds* per wash cycle
- Energy savings of up to 21%*
- Up to 80%* steam reduction – for a better indoor climate without visible steam emission
- Optimum drying results thanks to a reduction of residual moisture – by up to 98%* for dishes and up to 75%* for glasses

*All data compared to previous model. They are shown as maximum values and refer to savings when using the *ComfortAir* heat recovery system.

M-iClean U –

innovative cutting edge technology and design

M-iClean US

So small and yet so powerful

Measuring only 460 x 700 mm, the *M-iClean US* fits perfectly under any counter and is a great glasswasher and dishwashing machine. Its intuitive operating concept takes all the hassle and effort out of dishwashing. With the MEIKO *ComfortAir* heat recovery system, steam is reduced by up to 80%* at the end of the wash cycle. Dishes and glasses are therefore ready for use after a few seconds. As a glasswasher with the MEIKO *GiO MODULE*, the technology for demineralising wash water, the glasses and dishes will come out clean and free of residues with no need for polishing. This saves time and cuts down on breakages.



Comfort options:

- MEIKO *ComfortAir* heat recovery system
- MEIKO *GiO MODULE* technology
- Water change programme
- *Private Label 2.0* – individual design on start screen and screen saver

Entry height

H 315 mm

Dimensions

H: 700–735 mm, W: 460 mm,
D: 600 mm

Rack size

400 x 400 mm

Rack capacity

Up to 40 racks/hour

M-iClean UM

Outstanding cleanliness in bistros and cafés

The striking LED indicator handle on the *M-iClean UM* offers the optimum overview and a convenient way to control functions. The convenient glass display with intuitive one-touch operation is the control centre of the *M-iClean UM*. With the MEIKO *ComfortAir* heat recovery system, steam is reduced by up to 80%* at the end of the wash cycle, and also valuable and expensive energy saved. This reduces operating costs by up to 21%* compared to the previous model. And the best thing: the air is clear even when opening the door after the wash cycle. No hot steam into the operators' faces, no fogged-up glasses.



Comfort options:

- MEIKO *ComfortAir* heat recovery system
- MEIKO *GiO MODULE* technology
- Water change programme
- Cold water rinse
- *Private Label 2.0* – individual design on start screen and screen saver

Entry height

H 315 mm

Dimensions

H 700–735 mm, W 600 mm,
D 600 mm

Rack size

500 x 500 mm

Rack capacity

Up to 40 racks/hour

M-iClean U
with
fully integrated
GiO MODULE

MEIKO GiO MODULE technology to demineralise wash water

The MEIKO *GiO MODULE* – the MEIKO technology to demineralise your wash water – a fully integrated part of the *M-iClean U* (optional). That includes the complete reverse osmosis module and the fine filter. It removes almost all foreign substances, minerals, bacteria and viruses from the water. MEIKO *GiO MODULE* technology provides high-purity wash water and thus brilliant washing results, without the need to polish.



MEIKO GiO MODULE

Integrated into the plinth

Dimensions (height):
options: 120 mm or 150 mm



MEIKO GiO MODULE

At the rear of the machine

Dimensions (depth):
90 mm



MEIKO GiO MODULE

Close to the machine or

e.g. in another room
Dimensions (W x D x H)
140 x 550 x 600 mm

M-iClean UM+

The specialist with large entry height

Thanks to its extra-generous entry height of 435 mm, the *M-iClean UM+* dishwashing machine can cope with all large washware such as trays. Intelligent monitoring by sensors ensures that a close eye is kept on every aspect of the machine's operation. The optional *GIO MODULE* for demineralising wash water offers the best quality of washing and efficiency: no need to polish glasses ever again and much fewer glass breakages.



Comfort options:

- MEIKO *ComfortAir* heat recovery system
- MEIKO *GIO MODULE* technology
- Water change programme
- *Private Label 2.0* – individual design on start screen and screen saver

Entry height

H 435 mm

Dimensions

H 820–855 mm, W 600 mm, D 600 mm

Rack size

500 x 500 mm

Rack capacity

Up to 40 racks/hour

M-iClean UL

The expert for bakeries and butcher shops.

The *M-iClean UL*, with a rack size of 600 x 500 mm and an entry height of 435 mm, is perfect for washing large racks, trays, and bulky washware. With MEIKO's technology for heat recovery, MEIKO *ComfortAir*, the *M-iClean UL* saves up to 21%* valuable and expensive energy.



Comfort options:

- MEIKO *ComfortAir* heat recovery system
- MEIKO *GIO MODULE* technology
- Water change programme
- *Private Label 2.0* – individual design on start screen and screen saver

Entry height

H 435 mm

Dimensions

H 820–855 mm, W 600 mm, D 680 mm

Rack size

500 x 500 mm

to 600 x 500 mm

Rack capacity

Up to 40 racks/hour

The clean way

The MEIKO bottle washing system

- Bottles washed to hygienically safe standards (in accordance with DIN 10511)
- Significant payroll and time savings compared to manual bottle washing
- Can be retrofitted to any MEIKO *M-iClean UM/UM+*
- Easy to switch between washing bottles and standard washware in a few movements taking just a few seconds
- Suitable for glass and plastic bottles up to 114 mm in diameter and 245 mm in height (*M-iClean UM*) or 370 mm in height (*M-iClean UM+*). The bottle opening should measure 18-80 mm in diameter.



M-iClean UM+ / UL

with lower cupboard and base frame

Ergonomic and hygienic extensions

Cabinet bases and subframes in stainless steel create more space and increase operating comfort. The floor clearance this achieves ensures maximum hygiene when cleaning the room.

Cabinet height

400 mm

Base frame height

150 mm



*All data compared to previous model. They are shown as maximum values and refer to savings when using the *ComfortAir* heat recovery system.

M-iClean H with automatic hood system – a healthier and more ergonomic workplace



M-iClean H – efficient and resource saving with flawless washing results

The unique MEIKO ergonomics concept: designed for ergonomic use, the *M-iClean H* is much easier to load and unload, putting less strain on the operator's back and muscles.

The *M-iClean H* automatically detects when you have finished loading the machine. The hood then closes automatically and the wash cycle starts all by itself – with no contact at all, certainly no heaving, dragging or pulling.



Easy and comfortable to load and unload



All it takes to open and close the hood is a gentle touch from the operator in manual mode



The automatic rack detection system saves on unnecessary handling

Instead, you have a little extra time to get on with other tasks. The progress bar on the intuitive and easily accessible operating panel shows how much time is left.

As soon as the programme finishes, the hood lifts again, smoothly and silently.

The glasses and dishes can then be moved to the drying table, where the last few drops of wash water disappear. All that remains is to empty the racks, stack the things away, and you're done. Particularly ergonomic: the flexible operating panel. It is positioned exactly where it is needed – at eye level. No need to bend down, strain your neck, or constantly shift from one place to another. It can be installed on the right or left hand side of the machine, or wherever is most comfortable.

Adjustable working heights, versatile control system, intuitive, user-friendly operation – the MEIKO ergonomics concept realises a vision: washing without effort or physical strain, while maximising operational efficiency.

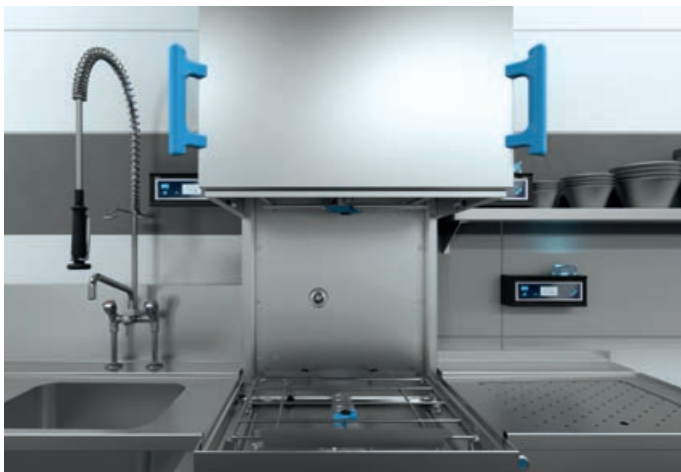
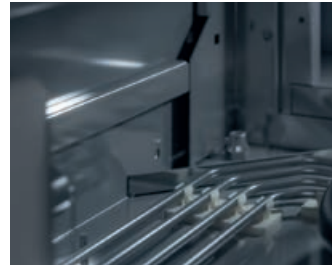


Plenty of space under the hood. Whether as a single or a double rack version: there is plenty of space under the *M-iClean H* hood for everything large or bulky. And the machine produces sparkling clean and hygienic results whatever the washware, from glasses and dishes to pots, pans and baking trays.

User-friendly and self-explanatory: the blue operating concept. Any parts that are marked in blue can be removed, washed and replaced. The *M-iClean H* automatically checks that everything has been put back in the right place.



Quality made by MEIKO: stainless steel instead of plastic, innovative cutting-edge technology and design for high functionality and investment security.



Ergonomics saves time and costs:

- Efficient processes and automation reduce wash cycle times
- Quick drying means dishes are ready for use quickly, too
- An ergonomically oriented set up in the dishwashing area protects employees and can help reduce sick days
- Better ratings as a workplace
- Noticeably better indoor climate with lower heat and steam emissions
- Technical features that reduce operating costs

***M-iClean H*: user friendly and efficient**

M-iClean H with automatic hood system – saves time and makes life easier for staff

M-iClean HM

Miraculously user friendly and economical

Easier work, shorter wash cycle times, improved indoor climate, and flawless washing results thanks to sophisticated technology. With a flexible display, convenient automatic hood system, and blue operating concept.

Comfort options:

- *PowerWash* (3 pump motor settings)
- *AirConcept* exhaust air heat recovery
- Waste water heat recovery
- Heat retention
- Water change programme
- Drying module
- MEIKO *GiO MODULE* technology (see fig.)
- *Private Label 2.0* – individual design on start screen and screen saver

Passing height

H 505 mm

Dimensions

H 2080 mm, with MEIKO
AirConcept H 2180 mm
W 635 mm, D 750 mm

Rack size

500 x 500 mm

Rack capacity

Up to 60 racks/hour

M-iClean HL

Designed especially for large passing heights

For safe, ergonomic working with a passing height of 560 mm and a rack size of 500 x 500 mm to 650 x 500 mm. The *M-iClean HL* hood type dishwashing machine features innovative technology and top marks for speed and hygiene. It washes dishes, racks, pots and bulky items cleanly and effortlessly with *PowerWash* as a standard feature.

Comfort options:

- *AirConcept* exhaust air heat recovery
- Waste water heat recovery
- Heat retention
- Water change programme
- Drying module
- MEIKO *GiO MODULE* technology
- *Private Label 2.0* – individual design on start screen and screen saver

Passing height

H 560 mm

Dimensions

H 2190 mm, with MEIKO
AirConcept H 2235 mm
W 735 mm, D 750 mm

Rack size

500 x 500 mm
to 650 x 500 mm

Rack capacity

Up to 60 racks/hour



M-iClean HXL

Twice the performance and comfort

There is room for two racks of washware beneath the spacious *M-iClean HXL* double hood. The machine therefore makes light work of glasses, cutlery and dishes, as well as bulky items such as pots, pans and baking trays. A uniquely energy-saving and highly efficient way to wash 120 racks per hour (basic programme runtime for dishes: 60 seconds).

Comfort options:

- *PowerWash* (3 pump motor settings)
- *AirConcept* exhaust air heat recovery (Fig.)
- Waste water heat recovery
- Heat retention
- Water change programme
- Drying module
- MEIKO *GiO MODULE* technology
- *Private Label 2.0* – individual design on start screen and screen saver

Passing height

H 505 mm

Dimensions

H 2080 mm, with MEIKO

AirConcept H 2180 mm

W 1180 mm, D 750 mm

Rack size

2x (500 x 500 mm)

Rack capacity

Up to 120 racks/hour

Sparkling results without hand polishing thanks to the fully integrated **MEIKO GiO MODULE**

The MEIKO *GiO MODULE* – the MEIKO technology to demineralise your wash water – a fully integrated part of the *M-iClean H* (optional). It removes almost all foreign substances, minerals, bacteria and viruses from the water. MEIKO *GiO MODULE* technology provides high-purity wash water and thus brilliant washing results, without the need to polish.



Great value packages*:

- Pure**Energy** package**
- FeelGood**Climate** Package
- Miraculous**Shine** Package

* We would be delighted to tell you about the price benefits of the value packages and the various options for combining them. Please ask your sales and service partner.

** Not available for *M-iClean HXL*

Multifunctional warewashing technology – full washing power for all types of washware

MEIKO M-iClean PF-S

All-rounder, small on space

The MEIKO *M-iClean PF-S* packs all the punch of a premium utensil washer in a unit that takes up less than 1 m² of floor space. Nevertheless, there is also room for bulky washware in the large wash chamber. 'Doesn't fit' is a thing of the past. This is how to make use of your existing gaps and free spaces.

Comfort options:

- *AirConcept* exhaust air heat recovery
- MEIKO *GiO MODULE* technology
- Third dosing unit incl. suction lance for defoamer
- Hold-down grid integrated into the rack
- Water change programme (with partial water change function)
- Suction lances with empty level monitoring
- *Private Label 2.0* – individual design on start screen and screen saver
- Thermal disinfection Thermolabel 71°C

Entry height

H 830 mm

Dimensions

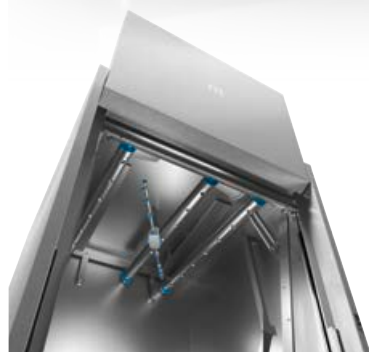
H 1868 mm (2271 mm with *AirConcept*), W 775 mm, D 898 mm

Rack size

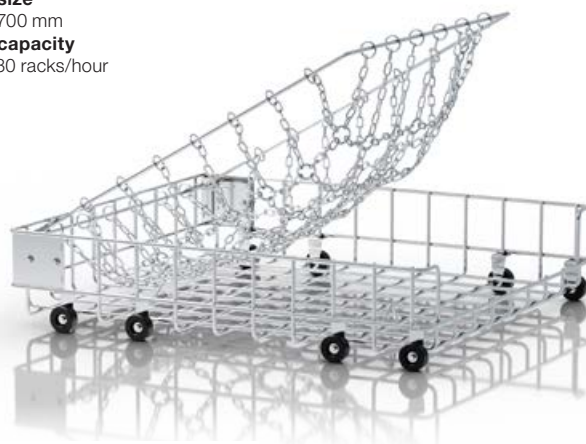
608 x 700 mm

Rack capacity

Up to 30 racks/hour



The extremely solid structure in combination with reversing wash pipes and particularly high water pressure make short work of stubborn stains and hard-to-reach corners. Access all areas.



The new hold-down grid* is now firmly integrated. It's the perfect way to stop lighter items of washware from moving around during the wash. This ensures reliable hygiene even at high washing pressures. To unload, simply pull the grid up to lock it back into its raised position.

No need to fetch it from the store room, because it's already part of the rack.

*Optional extra

More ergonomics and ease of work: the front door can be folded down in seconds for free access to the wash chamber. This allows ergonomic cleaning of the interior and easy maintenance.

DV 270.2

For multifunctional washing applications

The hood type dishwashing machine DV 270.2 cleans pots, containers, gastronorm containers, meat moulds, plates, containers, workware and other difficult to clean items hygienically and economically. It can remove even the most stubborn dirt.

Comfort options:

- Automatic hood system with separate buttons for opening and closing the hood
- *Point2 AirConcept* exhaust air heat recovery
- MEIKO *GiO MODULE* technology

Passing height

H 650 mm

Dimensions

H 2392 mm, with *Point2 AirConcept* H 2510 mm

W 1490 mm, D 995 mm

Rack size

1310 x 690 mm

Rack capacity

Up to 30 racks/hour



FV 130.2

Max. washing power in min. space

The FV 130.2 utensil washer works with a reversing wash system, combined with a functional rotary arm rinse system. It is controlled by *MIKE 2*, a fully electronic MEIKO control system.

The wash chamber has plenty of space for pots, pans, bowls, trays, kitchen utensils, crates for transporting groceries and much more.

Comfort options:

- *Point2 AirConcept* exhaust air heat recovery
- MEIKO *GiO MODULE* technology

Entry height

H 740 mm

Dimensions

H 2185 mm, W 1030 mm, D 895 mm

Rack size

850 x 700 mm

Rack capacity

Up to 30 racks/hour



FV 250.2

Washing power in XXL

The FV 250.2 is the utensil washer with larger dimensions to offer even more interior space and higher capacity, e.g. for three racks next to each other or for even larger, difficult to clean baking trays, pots and implements. Economical washing is also possible in periods of low utilisation.

Comfort options:

- *Point2 AirConcept* exhaust air heat recovery
- MEIKO *GiO MODULE* technology

Entry height

H 890 mm

Dimensions

H 2490 mm, W 1490 mm, D 895 mm

Rack size

1310 x 700 mm

Rack capacity

Up to 30 racks/hour



MEIKO®
ACTIVE



For sustainable hygiene and impressive washing results, MEIKO recommends cleaning and hygiene products made by **MEIKO ACTIVE**.

The machines meets the hygiene requirements of EN 17735.